



Clovelly Court, 3 Spring Promenade, West Drayton, UB7

- Drayton Garden Village
- Furnished
- Terrace
- EPC Rating- B
- One bedroom apartment
- Ground floor
- Available for July

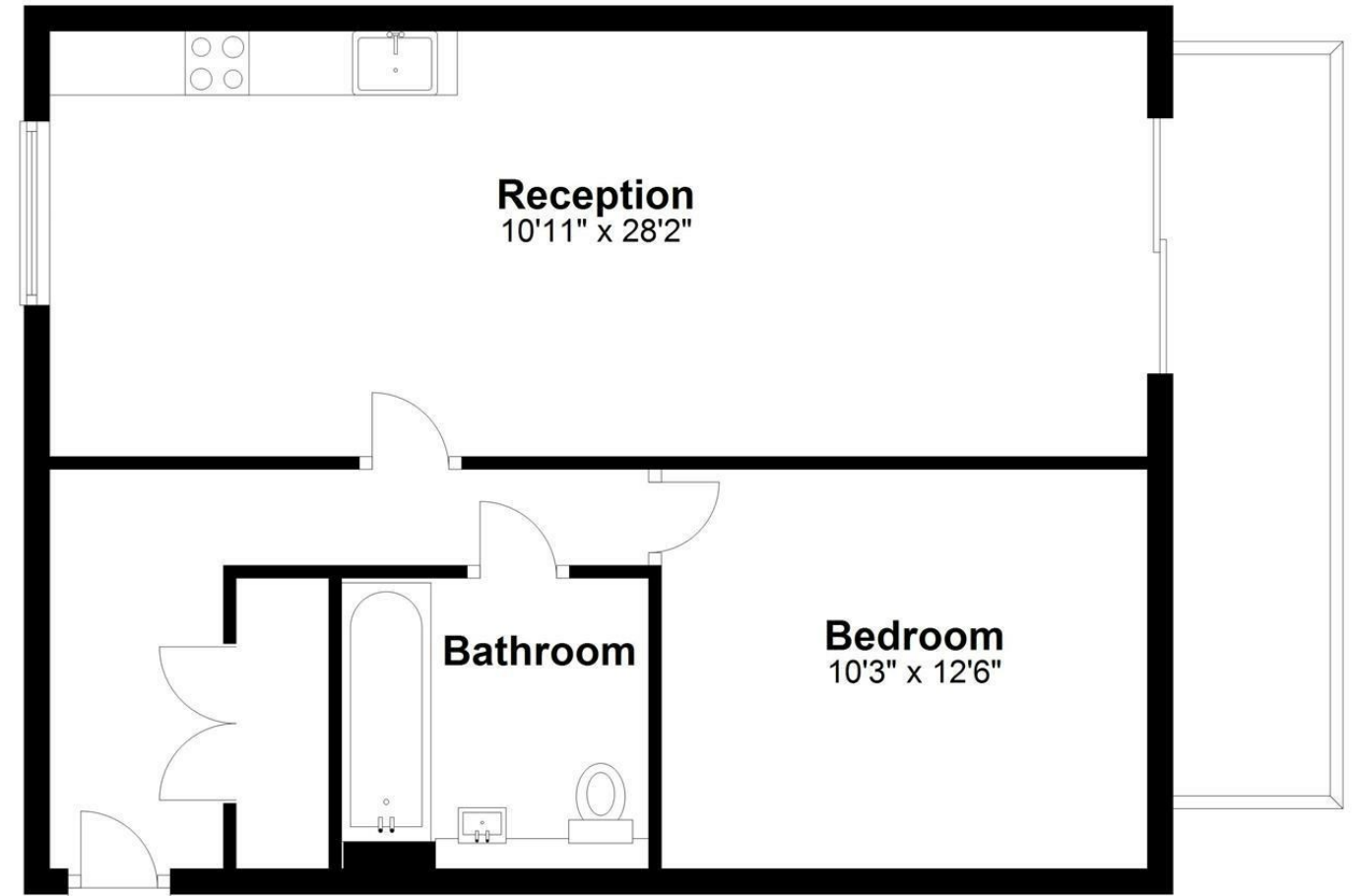
£1,475 PCM

Description

A one bedroom ground floor apartment, set in the popular development of Drayton Garden Village. The accommodation consists of an entrance hallway leading to the bedroom, open plan lounge, fitted kitchen and dining room with doors leading to the terrace. The property is finished off with a fully fitted bathroom suite. Further benefits include double glazing and an eco friendly, highly efficient, hot water and heating system. Commuters will also benefit from West Drayton train station which is located a short walk away and offers direct services into London Paddington and beyond. Further connections to Heathrow Airport, M4 and M25 can also be found locally. Call now for a viewing as demand is expected to be high. Available for July and presented furnished.

Ground Floor

Approx. 606.5 sq. feet



Total area: approx. 606.5 sq. feet

IMPORTANT NOTICE

These particulars have been prepared upon information supplied by the Vendor and should be verified by your surveyors and solicitors. We have prepared these sales particulars as a general guide to give a broad description of the property. They are not intended to constitute part of an offer or contract. We have not carried out a structural survey and the services, appliances and specific fittings have not been tested. All photographs, measurements, floor plans and distances referred to are given as a guide only and should not be relied upon for the purchase of carpets or any other fixtures or fittings. Lease details service charge and ground rent (where applicable) are given as a guide only and should be checked and confirmed by your solicitor prior to exchange of contracts